

Systemic Risk Identification

Trevor Jay

Risk Decisions Ltd

trevor.jay@riskdecisions.com

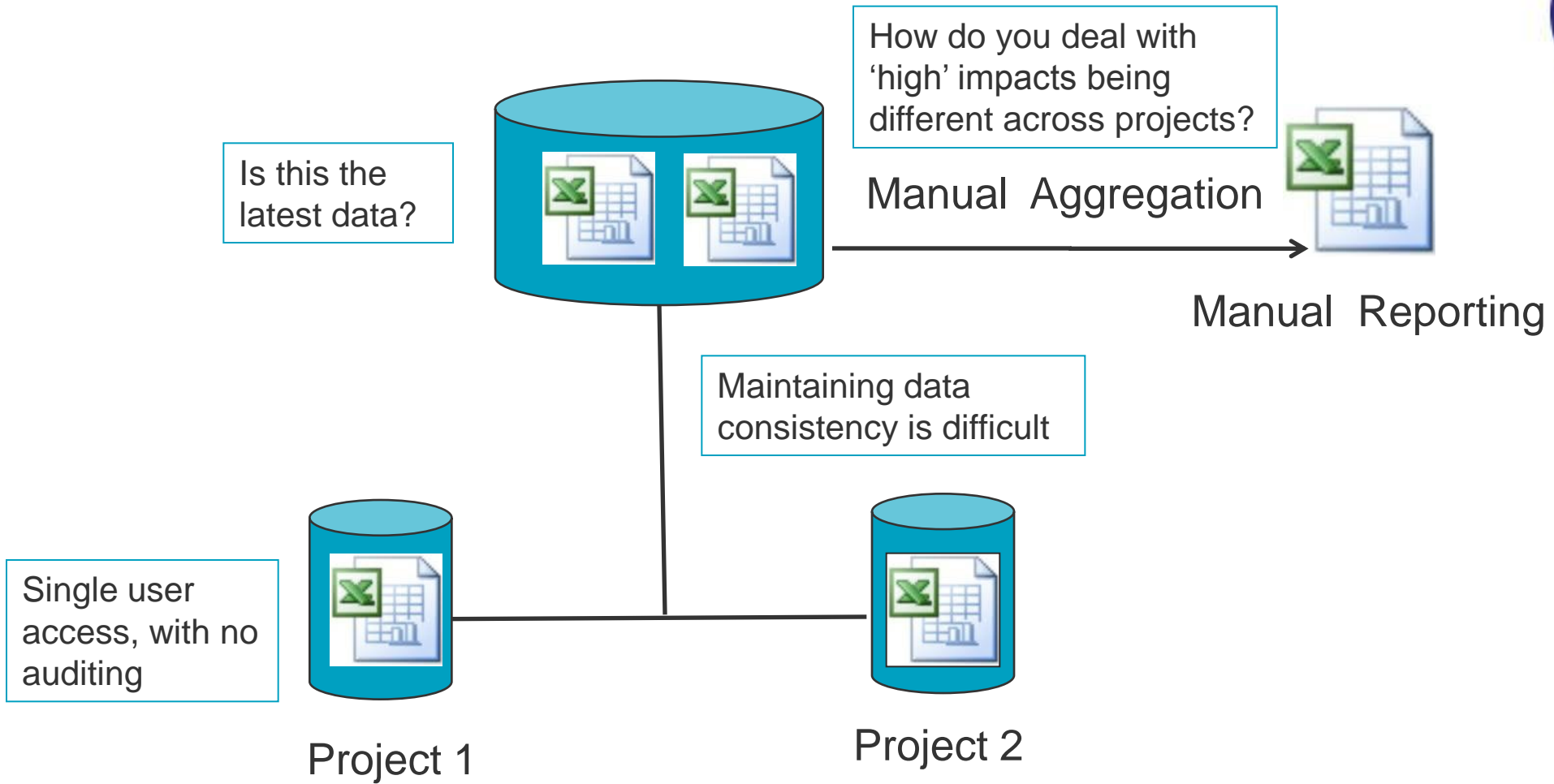
07595 206805



Agenda

- Spreadsheet approach
- Database approach
- Using Predict! Risk Controller

Spreadsheet approach



Database approach

Predict! Risk Controller

Multiple users can update data concurrently



Project 1

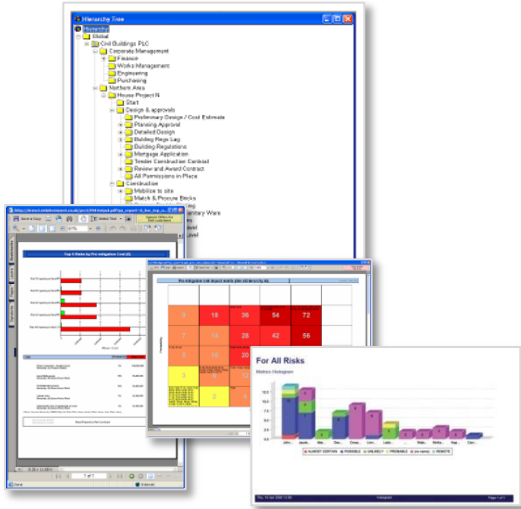


Project 1

Managers can easily view across multiple projects or departments



Functional managers can see just 'their' risks across the enterprise



Aggregated Reporting



Project 2



Project 2

Different scoring system and categories from Project 1 if required

Filters

Hierarchy: None CHANGE Threat: Engineering CHANGE Action: None CHANGE
 Layout: Full Administrator CHANGE Issue: None CHANGE Closed items: Not hidden CHANGE
 Organisation: Base Organisation CHANGE Opportunity: None CHANGE Shown items: Everyone's CHANGE



MENU TREE REFRESH TREE HOME EXIT

Just viewing risks categorised as engineering

All Threats Change

Threat register for All. 20 found. Displaying 10, from 1 to 10. Page 1 / 2.

Save Add Cancel Export to Excel

Navigation icons: Home, Previous, Next, First, Last

ID	Name	Ref	Cause	Consequence
10	Water table	Bid 1__1T		
11	Soft spots	Bid 1__2T		
14	Foul drain and pump	Bid 1__5T	Four drain and pump does not have the capacity for the new connection(s)	
20	New earthing	Bid 1__11T	Clashing of Earthing grid with new foundations.	
21	Local power proximity	Bid 1__12T	Local power is a critical circuit to be returned to circuit timely manner to avoid extensive penalties.	
23	Availability of free issue items	Bid 1__14T	Items to be issued need to aligned to the works schedule	

Filter on column

For text boxes, enter text,
 For tick boxes, type yes or no,
 For date fields, use format dd/mm/yyyy

foundation

OK Cancel

Searching within the description for 'foundation'

Filters

Hierarchy: None CHANGE	Threat: Engineering CHANGE	Action: None CHANGE
Layout: Full Administrator CHANGE	Issue: None CHANGE	Closed items: Not hidden CHANGE
Organisation: Base Organisation CHANGE	Opportunity: None CHANGE	Shown items: Everyone's CHANGE



MENU TREE REFRESH TREE HOME EXIT

All Threats [Change](#)

Threat register for All. Filtered by Description: foundation. 3 found. Displaying 3, from 1 to 3. Page 1 / 1.

Save Add Cancel Export to Excel Remove filter

Navigation arrows: first, previous, next, last

ID	Name	Ref	Description	Cause	Consequence
7	Groundworks Problems	House_6T	There is a risk that foundation work will uncover existing services	Inadequate council planning information	Redesign of foundations involvement of other co
20	New earthing	Bid 1__MT	Clashing of Earthing grid with new foundations.		
59	Groundworks Problems	AmberGold__RT	There is a risk that foundation work will uncover existing services	Inadequate council planning information	Redesign of foundations involvement of other co

Foundation is found in the description of 3 risks across 3 different projects

Filters

Hierarchy: None [CHANGE](#) Threat: None [CHANGE](#) Action: None [CHANGE](#)
 Layout: Full Administrator [CHANGE](#) Issue: None [CHANGE](#) Closed items: Not hidden [CHANGE](#)
 Organisation: Base Organisation [CHANGE](#) Opportunity: None [CHANGE](#) Shown items: Everyone's [CHANGE](#)



[MENU](#) [TREE](#) [REFRESH TREE](#) [HOME](#) [EXIT](#)

- 0: MyHierarchy
- 1: Enterprise
 - 4: Corporate
 - 17: Functions
 - 18: Finance
 - 19: Strategy
 - 20: Legal
 - 21: Contracts
 - 22: Sales & Marketing
 - 23: Human Resources
 - 24: Engineering
 - 01: Parent Threat for Foundations
 - 25: Health & Safety
 - 26: IT
 - 75: Commercial
 - 76: Operations
 - 27: Divisions
 - 33: New business
 - 63: Programmes
 - 2: Test Area
 - 3: New business
 - 5: Training Area

[Save](#) [History](#) [Cancel](#) [Close](#)

Threat 101 - Engineering__1T assessed under 1: Corporate and Category Group 1: Enterprise

Name [?](#) Parent Threat for Foundations
 Current Score [?](#) ████████ Residual Score [?](#) ████████
 Type [?](#) Threat [Change](#) Status [?](#)
 Hierarchy [?](#) 24 Engineering
 Cluster [?](#) 24 Engineering
 Calculate WBS
 Visible to - Base Organisation

Systemic risks identified can be linked as children to a management level risk

[Identification](#) [Categorisation](#) [Assessment](#) [Response](#) [Related risks](#) [Review](#) [Visibility](#) [Hyperlinks](#)

Description [?](#)

Description [?](#) Use this threat to manage systemic foundation threats found using Predict! filtering and in column searching.
 Cause [?](#)
 Consequence [?](#) Mitigation actions can be controlled at a higher, potentially more appropriate level. Performing single mitigation actions saves money compared to each project performing similar actions.

Raised by [?](#) Predict! Admin on 5 May 2011

Ownership [?](#)

Owner [?](#) Predict! Admin Accepted [?](#) No [Accept](#)
 Shadow Owner [?](#) on
 Leader [?](#) Reg RiskOfficer Approved version [?](#) No [Approve](#)